

CR80 CP WORKING LAMP WITH 3 LED

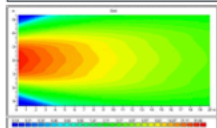


Features

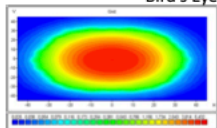
- Homologated according to ECE R10
- Compact, esthetic and elegant design
- Pan-tilt rotation mechanism
- Power LED Technology
- Thermal conductive polymer body
- **Corrosion protected**
- High efficiency reflector design
- Various connector options
- Integrated connector
- Clear or striped lens options
- Thermal shock resistant
- Impact shock resistant
- 6000°K Color Temperature
- Minimum 1750 lumen lighting values for 3 LED type
- Wide range voltage 9 – 60V DC
- Energy consumption 11W ± %10
- Connector type: Delphi 12124817 Deutsch DT06-2s
- SERKOvent color change with lamp type
- Weight: ~300g (~0,66lb)
- Dimensions: $\varnothing 80 \times 65 \text{mm}$ ($\varnothing 3,14 \times 2,55 \text{inch}$) Deutsch Connector
 $\varnothing 80 \times 75 \text{mm}$ ($\varnothing 3,14 \times 2,95 \text{inch}$) Delphi Connector
- 100% Tested before delivery



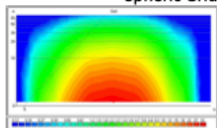
| PARTS | PARTS NAME | PARTS NO |
|-------|---|---------------|
| | CR80 CP 3 LED WORKING LAMP DELPHI CONNECTOR CLEAR LENS | 0001.3735.001 |
| | CR80 CP 3 LED WORKING LAMP DELPHI CONNECTOR STRIPED LENS | 0001.3735.011 |
| | CR80 CP 3 LED WORKING LAMP DEUTSCH CONNECTOR CLEAR LENS | 0001.3735.000 |
| | CR80 CP 3 LED WORKING LAMP DEUTSCH CONNECTOR STRIPED LENS | 0001.3735.010 |



Bird's Eye



Spheric Grid



Driver's View

